



# SMS3

## Smart Media Server



# USER GUIDE

*Copyright © 2006 Rusound All rights reserved. All trademarks are the property of their respective owners. Rusound is not responsible for typographical errors or omissions.*

*This product includes some software components that are licensed under the General Public License (GPL). Source code for GPL components is available upon request.*

*This product includes software developed by GlobeCom GCAB AB. Copyright © 1999 GlobeCom GCAB AB.*

*All rights reserved. Music recognition technology and related data are provided by Gracenote®. CD and music-related data from Gracenote, Inc., Copyright © 2000-2003 Gracenote. Gracenote CDDDB® Client Software, Copyright © 2000-2003 Gracenote. This product and service may practice one or more of the following U.S. patents: #5,987,525; #6,061,680; #6,154,773; #6,161,132; #6,230,192; #6,230,207; #6,240,459; #6,330,593, and other patents issued or pending. Gracenote and CDDDB are registered trademarks of Gracenote. The Gracenote logo and logotype, the Gracenote CDDDB logo, and the "Powered by Gracenote" logo are trademarks of Gracenote.*



#### **End-User License Agreement**

##### **USE OF THIS PRODUCT IMPLIES ACCEPTANCE OF THE TERMS BELOW.**

This product contains technology and data from Gracenote of Emeryville, California ("Gracenote"). The technology from Gracenote (the "Gracenote Embedded Software") enables this product to do disc identification and obtain music-related information, including name, artist, track, and title information ("Gracenote Data"), which is included on the Gracenote Database (the "Gracenote Database").

You agree that you will use Gracenote Data, the Gracenote Database, and Embedded Software for your own personal non-commercial use only. You agree that you will access Gracenote Data only by means of the standard end user functions and features of this product. You agree not to assign, copy, transfer or transmit the Embedded Software or any Gracenote Data to any third party. YOU AGREE NOT TO USE OR EXPLOIT GRACENOTE DATA, THE GRACENOTE DATABASE, OR GRACENOTE COMPONENT, EXCEPT AS EXPRESSLY PERMITTED HEREIN.

You agree that your non-exclusive license to use the Gracenote Data, the Gracenote Database, and Embedded Software will terminate if you violate these restrictions. If your license terminates, you agree to cease any and all use of the Gracenote Data, the Gracenote Database, and Gracenote Embedded Software. Gracenote reserves all rights in the Gracenote Data, Gracenote Database, and Gracenote Embedded Software, including all ownership rights. You agree that Gracenote may enforce its rights under this Agreement against you directly in its own name.

The Embedded Software and each item of Gracenote Data are licensed to you "AS IS." Gracenote makes no representations or warranties, express or implied, regarding the accuracy of any Gracenote Data. Gracenote reserves the right to delete data or to change data categories in any Data updates and for any cause that Gracenote deems sufficient. No warranty is made that the Embedded Software is error-free or that functioning of the Embedded Software will be uninterrupted. Gracenote is not obligated to provide you with any new enhanced or additional data types or categories that Gracenote may choose to provide in the future.

GRACENOTE DISCLAIMS ALL WARRANTIES EXPRESS OR IMPLIED, INCLUDING, BUT NOT LIMITED TO, IMPLIED WARRANTIES OF MERCHANTABILITY, FITNESS FOR A PARTICULAR PURPOSE, TITLE, AND NON-INFRINGEMENT. GRACENOTE DOES NOT WARRANT THE RESULTS THAT WILL BE OBTAINED BY YOUR USE OF THE GRACENOTE COMPONENT OR ANY GRACENOTE SERVER. IN NO CASE WILL GRACENOTE BE LIABLE FOR ANY CONSEQUENTIAL OR INCIDENTAL DAMAGES OR FOR ANY LOST PROFITS OR LOST REVENUES.

## Warnings and Cautions



**WARNING: TO REDUCE THE RISK OF FIRE OR ELECTRIC SHOCK, DO NOT EXPOSE THIS APPLIANCE TO RAIN OR MOISTURE.**

**CAUTION: TO REDUCE THE RISK OF ELECTRIC SHOCK, DO NOT REMOVE COVER. NO USER - SERVICEABLE PARTS INSIDE. REFER SERVICING TO QUALIFIED SERVICE PERSONNEL.**

The lightning flash with arrowhead symbol, within an equilateral triangle, is intended to alert the user to the presence of uninsulated "dangerous voltage" within the product's enclosure that may be of sufficient magnitude to constitute a risk of electric shock to persons.

The exclamation point within an equilateral triangle is intended to alert the user to the presence of important operating and maintenance (servicing) instructions in the literature accompanying the appliance.

If you have any questions please call Russound Inc. at 1-800-638-8055 or 603-659-5170.

### Safety Instructions:

1. Read Instructions - All the safety and operating instructions should be read before the appliance is operated.
2. Retain Instructions - The safety and operating instructions should be retained for future reference.
3. Heed Warnings - All warnings on the appliance in the operating instructions should be adhered to.
4. Follow Instructions - All operating and user instructions should be followed.
5. Water and Moisture - The appliance should not be used near water; for example, near a bathtub, washbowl, kitchen sink, laundry tub, in a wet basement, or near a swimming pool.
6. Carts and Stands - The appliance should be used only with a cart or stand that is recommended by the manufacturer. An appliance and cart combination should be moved with care. Quick stops, excessive force and uneven surfaces may cause the appliance and cart combination to overturn.
7. Wall or Ceiling Mounting - The appliance should be mounted to a wall or ceiling only as recommended by the manufacturer.
8. Ventilation - The appliance should be situated so that its location or position does not interfere with its proper ventilation. For example, the appliance should not be situated on a bed, sofa, rug, or similar surface that may block the ventilation openings, or placed in a built-in installation, such as a bookcase or cabinet that may impede the flow of air through the ventilation openings.
9. Heat - The appliance should be situated away from heat sources such as radiators, heat registers, stoves, or other appliances (including amplifiers) that produce heat.

10. Power Sources - The appliance should be connected to a power supply only of the type described in the operating instructions or as marked on the appliance.
11. Grounding or Polarization - Precaution should be taken so that the grounding or polarization means of an appliance is not defeated.
12. Power Cord Protection - Power supply cords should be routed so that they are not likely to be walked on or pinched by items placed upon or against them, paying particular attention to cords at plugs, receptacles, and the point where they exit from the appliance.
13. Cleaning - The appliance should be cleaned only as recommended by the manufacturer.
14. Non-use Periods - The power cord of the appliance should be unplugged from the outlet when left unused for a long period of time.
15. Object and Liquid Entry - Care should be taken so that objects do not fall and liquids are not spilled into the enclosure through the openings.
16. Damage Requiring Service - The appliance should be serviced by qualified service personnel when:
  - A. The power supply cord or the plug has been damaged;
  - B. Objects have fallen, liquid has spilled into the appliance;
  - C. The appliance has been exposed to rain;
  - D. The appliance does not appear to operate normally;
  - E. The appliance has been dropped or enclosure is damaged.
17. Servicing - The user should not attempt to service the appliance beyond that described in the operating instructions. All other servicing should be referred to qualified service personnel.

### Precautions:

1. Power – WARNING: BEFORE TURNING ON THE POWER FOR THE FIRST TIME, READ THE FOLLOWING SECTION CAREFULLY.
2. Do Not Touch The SMS3 With Wet Hands – Do not handle the SMS3 or power cord when your hands are wet or damp. If water or any other liquid enters the SMS3 cabinet, unplug the unit from power immediately and take the SMS3 to a qualified service person for inspection.
3. Location of SMS3 – Place the SMS3 in a well-ventilated location. Take special care to provide plenty of ventilation on all sides of the SMS3 especially when it is placed in an audio rack. If ventilation is blocked, the SMS3 may overheat and malfunction. Do not expose the SMS3 to direct sun light or heating units as the SMS3 internal components temperature may rise and shorten the life of the components. Avoid damp and dusty places.
4. Care – From time to time you should wipe off the front and side panels of the cabinet with a soft cloth. Do not use rough material, thinners, alcohol or other chemical solvents or cloths since this may damage the finish or remove the panel lettering.

## ***Table of Contents***

Introduction .....	6-7
<b>Controlling the Media Server</b>	
SMS3 Remote Control .....	8-9
UNO-S2 Keypad .....	10
UNO-S1 Keypad .....	11
UNO-TS2 Touchscreen .....	12-13
SRC2 Remote Control .....	14
Computer Interface .....	15-16
<b>Cataloging CDs</b>	
Load CD into SMS3 .....	17
Music Information and Cover Art .....	17
What's Playing .....	18
<b>How Themes Work</b>	
Themes .....	19
Default Themes .....	20
<b>Creating a New Theme</b>	
How to Add a Theme .....	21
Sample Theme "Recipes" .....	21-23
<b>Configure a Theme</b>	
Theme Icon .....	23
Name .....	23
Is a Playlist .....	23
PMA Prefers .....	23
PMA Effect .....	24
What to Play .....	24
Add Music .....	24
Add or Exclude .....	25
<b>Exploring Your New Theme</b>	
Skip .....	26
Play Again .....	26
Rate Song .....	26
More Detail .....	27
Edit Song/Album .....	28-29
Upload Cover Art.....	29



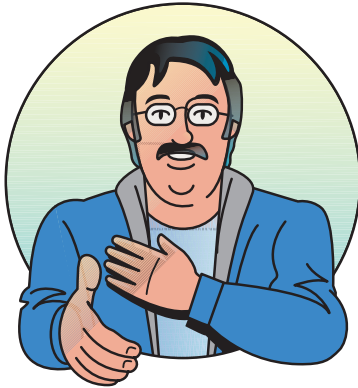
## *Table of Contents*

<b>Music Choices on the Fly</b>	
Music .....	30
Genre .....	30
Artist Name .....	31
Album Name .....	31
Song Title .....	31
Year .....	32
Internet Radio .....	32
Text Search .....	32
Newest Additions .....	32
Longest Since Heard .....	32
Recently Played .....	32
 <b>Changing an Existing Theme</b>	
Selections .....	33
Song Rating .....	33
Song Order .....	34
Remove Theme .....	34
 <b>Add Theme Icons</b>	
Add My Own Theme Icons .....	34
 <b>Photo Albums</b>	
Adding My Photo Albums .....	35
Viewing My Photo Albums .....	36
 <b>Add Digital Music Files</b>	
Loading My Music Files .....	37
 <b>Internet Radio</b>	
Internet Radio Handler .....	37-39
Internet Radio for Macintosh Users .....	40
 <b>Options and Status</b>	
View Messages .....	41-42
Schedules .....	42-43
System Time .....	43
Review Music .....	44-45
Network Information .....	45
Backing Up Media Server Hard Drive .....	45-46
 <b>Who to contact for Assistance .....</b>	<b>47</b>

## *Introduction*

### **Welcome**

If you are reading this, you must be the proud owner of a Russound Smart Media Server. If you are a music lover, this unassuming black box is going to change the way you listen to your CD collection. It holds up to 2500 hours (4140 hours for SMS3-250) of your music and replays it when, where and how you want it. This little book is your guide to making music with your media server.



**Hello, I'm the Dean of Media, your Personal Media Assistant. Look for me as I lend a hand with your media server.**

### **What the Media Server does**

The Russound Smart Media Server (SMS3) is an intelligent audio system that catalogs music from CDs and stores it on its local hard drive. The media server also plays MP3s and streaming audio via the Internet, and displays digital images such as photos or clip art.

As you add music and make listening requests of the media server, it monitors your choices and adapts its automatic playback of songs based on the way you use the system. This learning behavior is a key feature of the media server and is called the Personal Media Assistant.

### **Who is the Personal Media Assistant (PMA)?**

Named in recognition of the skill and spirit of one of Russound's most energetic dealers, the Dean of Media applies his knowledge and experience to personalizing your media server for you and your family. By watching your listening habits, the Dean automatically remembers your favorites and offers them up at a single touch. Don't like a song? Just skip over it – the Dean remembers and won't play it as often.

### **How he provides the background music for your life**

Imagine if you will enjoying just the right music for just the right times in your daily life – rock and roll for Friday afternoons, classical pieces for an early Saturday morning, internet news and weather on the weekdays, or children's sing-a-longs for birthday parties and play dates. And knowing you will hear only the songs you want – all jazz with nary a country song in sight...or sound. You create a Theme (Workout Music, Tracks to Relax By), add some songs to it, and set your Theme's "Recipe." As you listen, the Dean of Media watches what you choose or skip over and delivers that music more or less often, depending on your preferences. As you add more music, the Dean reads your Theme "recipes" and puts the right music into the right Themes. You can also schedule your media server to deliver your choice of Themes at specific times during the day or week. The media server is always ready to deliver your special mix of music over your choice of three streams.

## *Introduction*

### **Why Three Streams**

The “3” in SMS3 stands for three streams or sources of music available at the same time on the media server. These are set up and named through the multi-source/multi-zone system configuration. These stream names can also be created through the SMS3 interface. With three sources of music, the kids can listen to rock in the family room, mom can listen to the news in the study and dad can do a workout to jazz, all from the same media server.

### **Overview of Themes**

The SMS3 uses Themes to organize its stored music. Themes are created by you, the user, based on your music preferences. Create and name any number of themes such as Classical, Sunday Morning Tunes, Kid’s Stuff, etc. When a theme is created, you make a “recipe” for it in the Theme Editor. Pick the artists, albums, genres or other preference you want for that theme. When a new song is cataloged, it will be added to the Theme whose “recipe” calls for that artist or genre.

### **Video Display and Controls**

The SMS3 has a browser-based user interface that can be viewed on a TV, a PC, or on a computer monitor connected to the SMS3 rear panel. You can see what choices you are making through the graphical interface, as you use remote controls or keypads to scroll up, down and across the pages to view music lists and make listening choices.

### **Internet Radio**

When connected to the web, the SMS3 plays internet radio “stations” which are streams of radio delivered over the internet. If you select an internet stream, the media server will play that stream until another choice is made or the internet stream drops off or ends. Internet radio station URLs are stored in the SMS3 and can be added to Themes and Schedules.

### **Schedules**

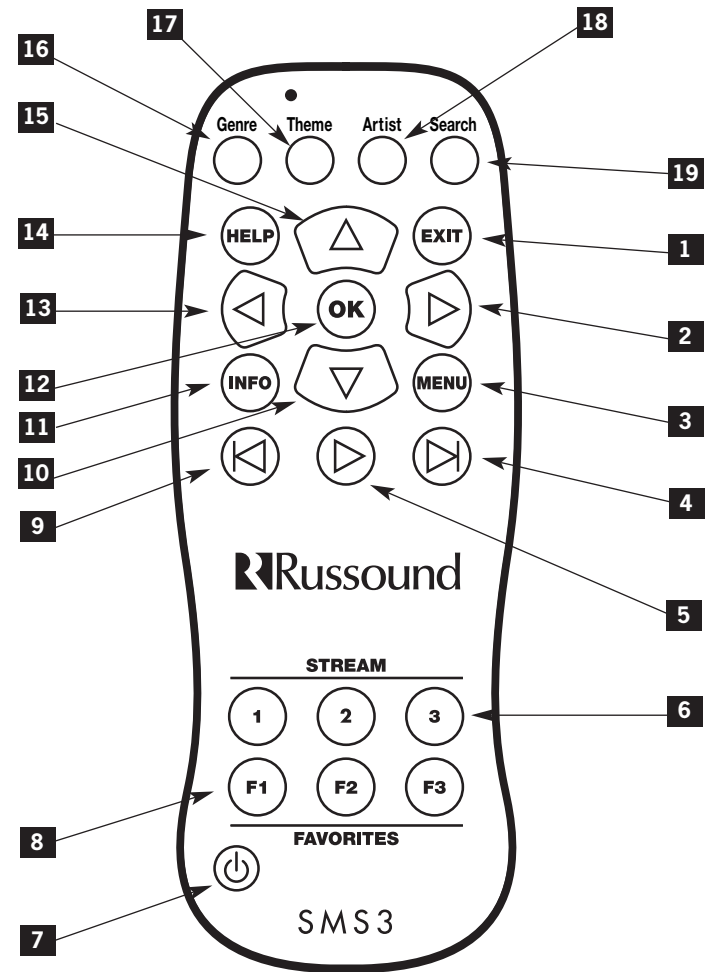
Schedules are used to automatically play Themes at specific times on specific days. Schedule choices are based on days of the week (Monday, Wednesday, etc.) and hours of the day (a.m. and p.m.), but not based on calendar days (1st, 22nd, 29th, etc.). For example, the media server can be scheduled to select and play a certain Theme every Monday at 8:00, but not for the 25th of each month. Schedules are a great way to automatically mix a variety of themes during the day, as the media server is designed to play one Theme continuously until another Theme is selected.

## Controlling the Media Server

### How Do I Control the Media Server?

The SMS3 can be controlled several ways, depending on what type of audio system it is in. For a Russound multi-source multi-zone RNET system such as the CAV6.6 or CAM6.6, the SMS3 can be controlled through the UNO keypad and SRC2 remote control. For other applications, it can be controlled with the SMS3-RC remote control. The SMS3 can also be controlled through a network-connected PC.

**SMS3  
Remote  
Control**



## *Controlling the Media Server*

### **SMS3 Remote Control**

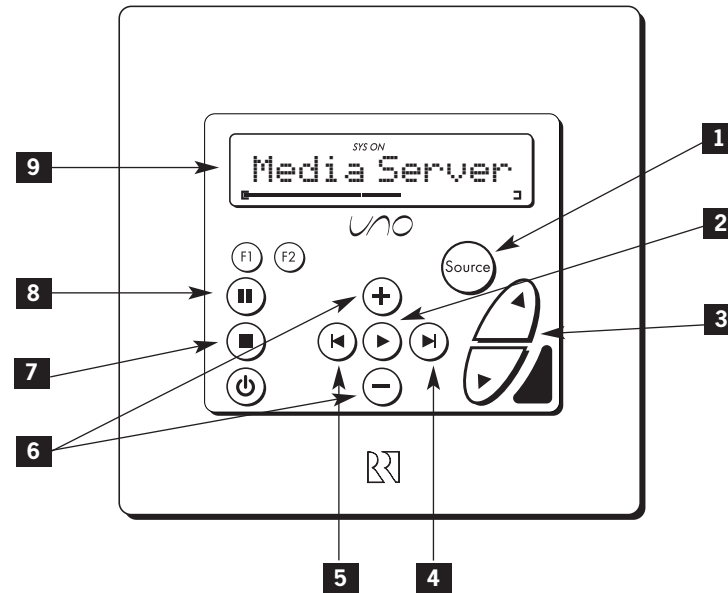
- 1** EXIT - Backs out of current menu (same as left arrow)
- 2** MENU RIGHT - Navigates to the right within a menu
- 3** MENU HOME - Returns to the home page (What's Playing)
- 4** NEXT SONG - Advances to the next song in the theme
- 5** PLAY - Starts a stopped or paused stream
- 6** STREAM SELECT - Selects Stream 1, 2 and 3 for control of that stream
- 7** POWER - Places the selected stream in/out of standby mode
- 8** FAVORITES - Recalls preset favorites
- 9** PREVIOUS SONG - One tap starts song over, two taps returns to the previous song
- 10** MENU DOWN - Navigates down within a menu
- 11** INFO - Advances to the More Details screen under "What's Playing"
- 12** OK - Selects highlighted item on page
- 13** MENU LEFT - Navigates to the left within a menu
- 14** HELP - Advances to the Help page
- 15** MENU UP - Navigates up within a menu
- 16** GENRE - Advances to the Genre list
- 17** THEME - Advances to the Theme list
- 18** ARTIST - Advances to the Artist list
- 19** SEARCH - Advances to Text Search



**The SMS3 Remote Control is used to control the SMS3 by pointing it directly at the front of the unit or at an IR receiver interfaced with the audio system.**

## Controlling the Media Server

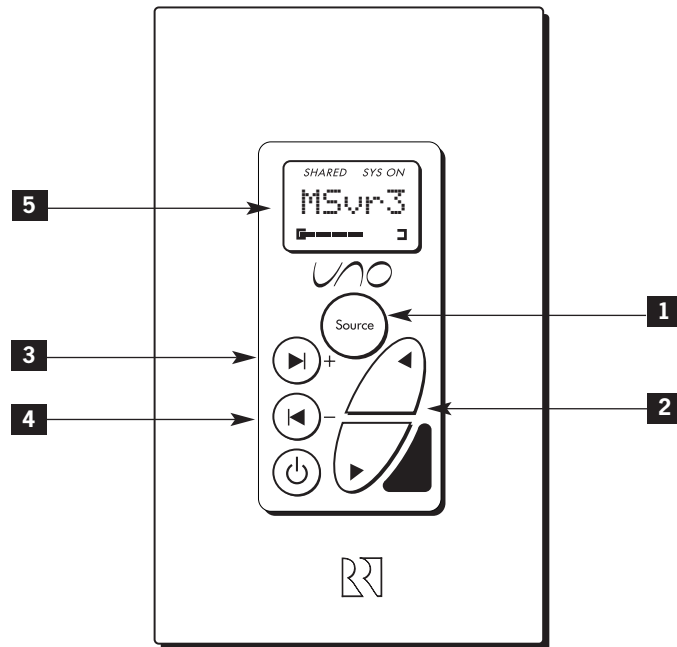
### UNO-S2 Keypad



- 1** SOURCE SELECT - Select stream to control
- 2** PLAY - Displays info for What's Playing
- 3** VOLUME - Adjust volume up/down in room
- 4** NEXT SONG - Advances to the next song in the theme
- 5** PREVIOUS SONG - One press restarts the current song. Two presses returns to the previous song in the theme.
- 6** SEARCH THEMES - Scrolls through list of themes
- 7** STOP - Exits any menu
- 8** PAUSE - Pause/unpause audio of active stream
- 9** DISPLAY - Shows name of song, theme, stream, etc.

## Controlling the Media Server

### UNO-S1 Keypad



- 1** SOURCE SELECT - Select stream to control
- 2** VOLUME - Adjust volume up/down in room
- 3** NEXT SONG - Advances to the next song in the theme (press)
- 3** NEXT THEME - Advances to the next theme in the Themes list (press and hold)
- 4** PREVIOUS SONG - One press restarts the current song. Two presses returns to the previous song in the theme.
- 4** PREVIOUS THEME - Advances to the previous theme in the Themes list (press and hold)
- 5** DISPLAY - Shows name of song, theme, stream, etc.



The UNO-S2 and UNO-S1 keypads, the UNO-TS2 touchscreen and the SRC2 Remote Control are used to control the SMS3 when it is part of an RNET-enabled audio system such as the CAV6.6 or the CAM6.6.

## Controlling the Media Server

### UNO-TS2 Touchscreen

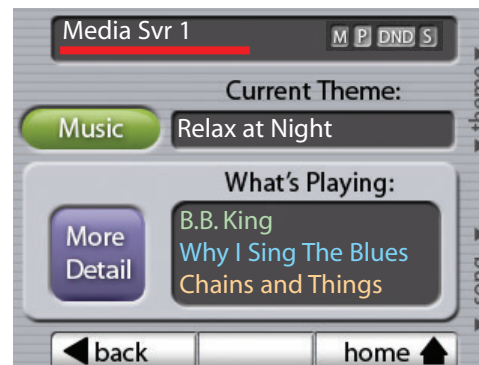
The UNO-TS2 offers an expanded view of source information and selections when used with the Russound SMS3 Media Server in an RNET system. A single view shows the active theme, artist name, song title and album name. Linked screens show more detailed song information and lead to search fields to choose music by genre, artist, album and more.

#### Media Server Main screen

On the UNO-TS2 home screen, press the SMS3 source button to select the media server. The main screen for the media server shows the current Stream, current Theme, and What's Playing now. When navigating within the media server screen set, you can return to this screen by pressing "main" on the navigation bar. The hard button secondary functions let you scroll through Themes or select another song within the current Theme without leaving the main screen.

#### Media Server More Detail screen

The More Detail screen for the media server shows expanded information for the current song: artist, album, song, and genre. The hard button secondary functions let you scroll through Themes or select another song within the current Theme without leaving the screen.



Example of SMS3 Media Server Main screen



Example of SMS3 Media Server More Detail (What's Playing) screen



## Controlling the Media Server

### UNO-TS2 Touchscreen (cont'd)

#### Media Server Request Music screen

The Request Music screen for the media server lets you request music a variety of ways: by Artist, by Album, by Genre and more. Press the desired item to proceed to that category's selections.

#### Media Server Request "by" screen

Each "request" selection screen shows the first four or five items in the list selected. To drill down to the item you want, use the "enter text" field to enter the name desired. The hard button secondary functions let you scroll through the alphabet to spell the name, using "letter" to choose the letter and "cursor" to move to the next character. As letters are entered, the list displays the results.

Additional results can be viewed by pressing the scroll up/down buttons on the left of the screen. When you see the selection you want, touch the selection bar to play it, or if choosing artist, advance to the next screen in the selection process.

For "Request by" Theme and "Request by" Internet Radio screens, selections are made using the scroll arrows, as these screens do not show a text entry field.

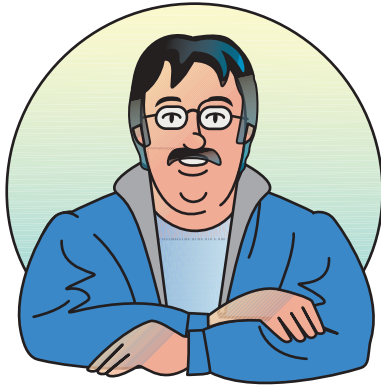


Example of SMS3 Media Server  
"Request by Artist" screen

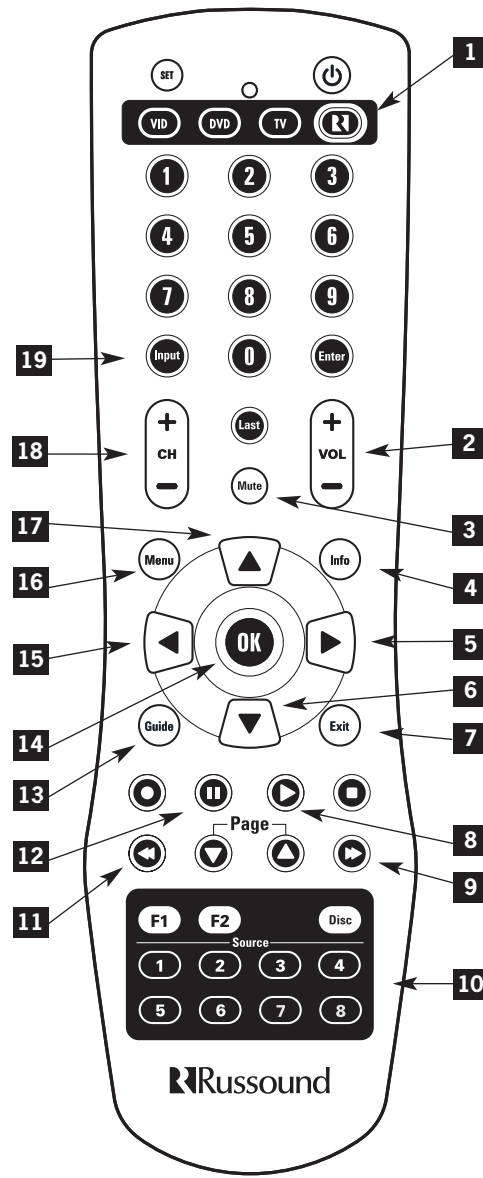


Example of SMS3 Media Server  
Music Request screen

## Controlling the Media Server



The SRC2 Remote Control is used to control the SMS3 by pointing it directly at an UNO keypad.



- 1** RUSSOUND SYSTEM BUTTON - Activates control of Russound system controller and keypads, and connected sources
- 2** VOLUME UP/DOWN - Raises and lowers the volume for the room you are in
- 3** MUTE - Mutes audio output of the room you're in
- 4** INFO - Shows "More Details" song information
- 5** RIGHT/NEXT - Navigates to the right or forward
- 6** DOWN - Navigates down a list
- 7** EXIT - Exits out of current page, exits out of any name entry field
- 8** PLAY - Shows "Now Playing" on UNO keypad
- 9** NEXT - Skips to next song in current theme
- 10** INPUT (Direct) - Directly selects streams and other configured sources by source number
- 11** PREVIOUS - Starts song over. Double press restarts previous song in theme.
- 12** PAUSE - Pauses/unpauses stream of media server
- 13** GUIDE - Accesses page-appropriate Help files
- 14** OK - Selects highlighted option
- 15** LEFT/BACK - Navigates to the left or back
- 16** MENU - Returns to home page
- 17** UP - Navigates up a list
- 18** CHANNEL UP/DOWN - Scrolls through Themes list
- 19** INPUT (Toggle) - Toggles through 3 streams and other configured sources

## Controlling the Media Server

### Computer Interface

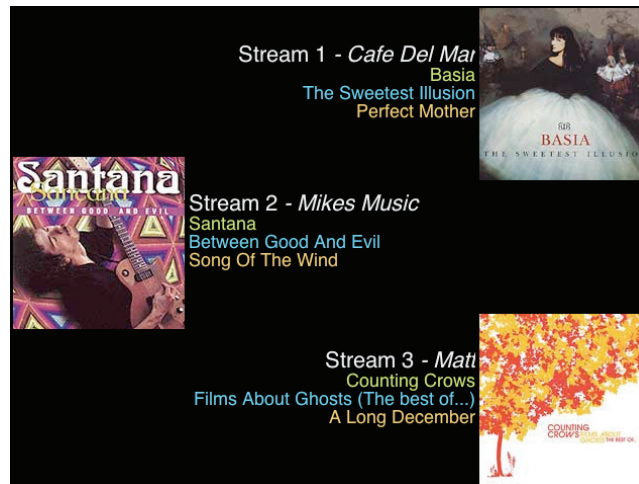
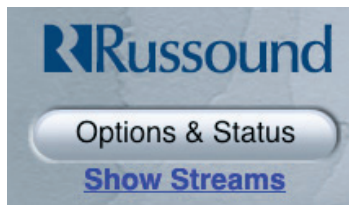
Use the Up, Down, Left (previous) and Right (next) keys on the keyboard of a networked computer or the mouse to navigate through the onscreen pages. Selections will be highlighted green and choices are made using the Enter or Return key.

Remember, to return to a previous page, use the “Back” button within the media server interface and NOT the web browser’s Back button. Also, do NOT use your browser’s Refresh/Reload button when navigating through SMS3 screens via your computer interface.

You can easily choose which stream to control from the web browser interface by clicking on the [Show Streams](#) link on the “What’s Playing” page. This selection brings up the media server’s screen saver, which shows the album, artist, song title and album art for the song currently playing on each stream. Simply click on the desired stream and web browser interface will switch to that stream.



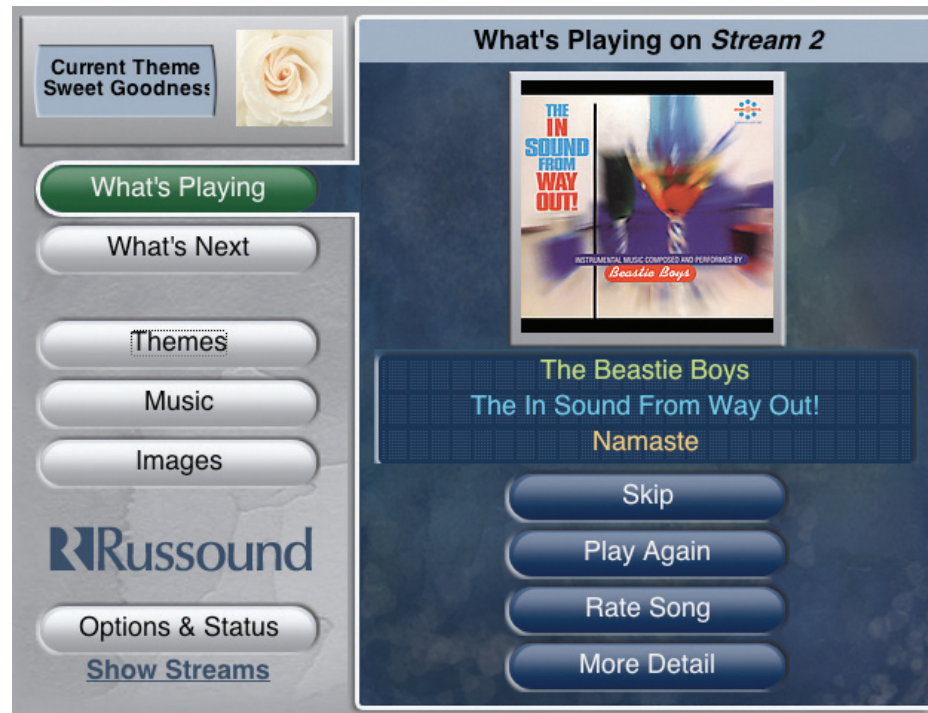
**When you select a stream from a web browser, you can control and modify it - but to HEAR it, the stream must be selected as the audio source through the audio system.**



## Controlling the Media Server

### Control Panel

The control panel or “Home” page of the media server’s onscreen display shows the main functions used to navigate the SMS3: What’s Playing, What’s Next, Themes, Music, Images and Options & Status.



What's Playing page (as seen from web browser)

The page also displays the current Theme in the upper left corner and the stream name on the top of the right-hand window. This large right-hand window also displays information when making selections.

## Cataloging CDs

### Enough Talk! Let's Rock!

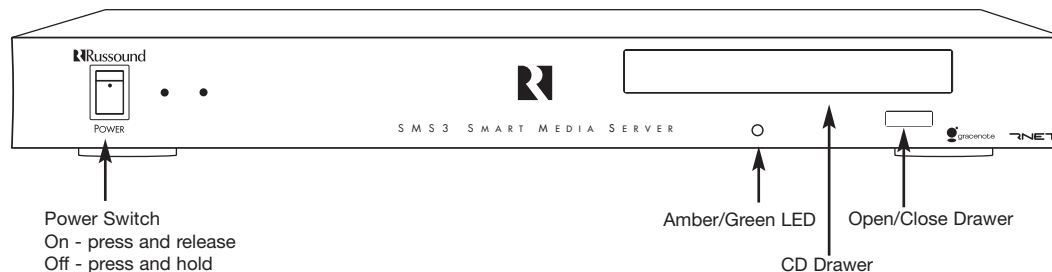
Now that you know your way around the SMS3, the next step is to load your music.

Press the CD drawer Open button on the front panel, insert an audio CD into the drive and press the button to close the drawer. The SMS3 will first “glance over” the CD to ensure it is sound (pun intended). If the CD has already been cataloged, the SMS3 will eject the disc. If it is a “new” CD, the SMS3 will then begin to catalog the files.

An amber or green LED located on the front panel below the drive will blink during this process. It normally takes about 12 minutes to catalog a CD, but may take longer if you are creating Themes, setting Schedules or otherwise using the media server at the same time. A dirty or scratched CD also takes longer to catalog.

While the CD files are being cataloged, the songs will be queued in the “All Songs” music Theme. Completed tracks can be heard by selecting the “All Songs” Theme.

When the cataloging process is finished, the amber/green LED will go dark, the CD will stop spinning and the drawer will open. If errors occur during the cataloging process the problems are queued for later retrieval and repair from the Review Music page.



### How Does the SMS3 Know the Name of What I've Cataloged?

Russound has teamed with Gracenote® music recognition service and Muze® entertainment information service to provide CD information and album art for the SMS3 via the Internet. This information, called metadata, includes song title, artist and album name, and genre (rock, jazz, etc.). When a CD is being cataloged by the SMS3, the media server consults the Gracenote music recognition service database via the Internet (or from the database loaded onto the media server, when no internet connection is present), then checks in with Muze for album cover art that is displayed when the album is played. When artist, album and track name are displayed, this information has been retrieved from the Gracenote CDDb music recognition service.

For MP3 files, the ID3 tags to identify them will be carried with the files when they are moved onto the media server hard drive from a networked computer. An ID3 tag includes the artist, song title, album and year, and the genre.



**Make sure the CD is clean and free of scratches. Dirty or damaged CDs may take much longer to catalog. In some cases it may seem like the CD has stopped. If this happens, eject the CD, clean it and try again.**

## Cataloging CDs

### Ok, I've loaded some CDs, now what?

Let's go to the home page and explore your options. When you first add music to the media server, the theme All Songs is already selected. You can see your music here.

#### What's Playing

When the What's Playing screen is active, the media server displays, for the currently playing song, the album cover art (if available), the artist name, the album name, and the song title. There are also four function options listed: Skip, Play Again, Rate Song (for non-playlist themes), and More Detail.

#### What's Next

Lists the names of upcoming songs in a theme. From this screen, you can see what songs are lined up to play in your selected theme. Before a song finishes, the next one is ready to play, which creates a smooth song transition. If you want to change the song order, select the song, and from the pop-up window, choose to Play Next, Skip, or Drop From Theme. Also, More Details gives you Genre, Track Length, Year and more.

Now let's put that music into your own themes.





## How Themes Work

### How Do Themes Work?

Themes are collections of music created, named and modified by you the listener. An almost unlimited number of Themes can be created.

Collections of music can include almost any way of characterizing your music. For example, a theme may contain a few favorite jazz songs from selected artists, all the blues songs, and all songs by Aerosmith. Theme editing is performed in the Edit Theme window.

### Themes

Lists the default Themes (All Songs, New Songs, and Requests Only), plus the option to Add New Theme. This is also where your created Themes will be listed. To pick an existing theme to play, scroll through the list, choose a name and click on "Play Theme" from the pop-up window. The media server will return to the What's Playing screen and the Theme name will show in the upper left box on the interface. You can also choose to "Play Theme Soon" to allow the current song to finish playing before the new theme starts.



**Be sure to play only Themes that have music in them! Otherwise, you won't hear anything!**



**You can copy an existing theme - just select it from the Themes window and pick “Copy Theme” then name the new theme. The new theme has duplicate selections and settings that can be adjusted if desired.**

## How Themes Work

### Default Themes

These Themes are pre-configured for the media server’s use and are not available for editing. These are: All Songs, New Songs and Requests Only.

### All Songs

Just like the name says, this theme has it ALL – all of the songs you have loaded onto the SMS3. When the All Songs theme is selected, it plays all songs from all genres in a random order. Click on What’s Next to see which songs are cued to play.

### New Songs

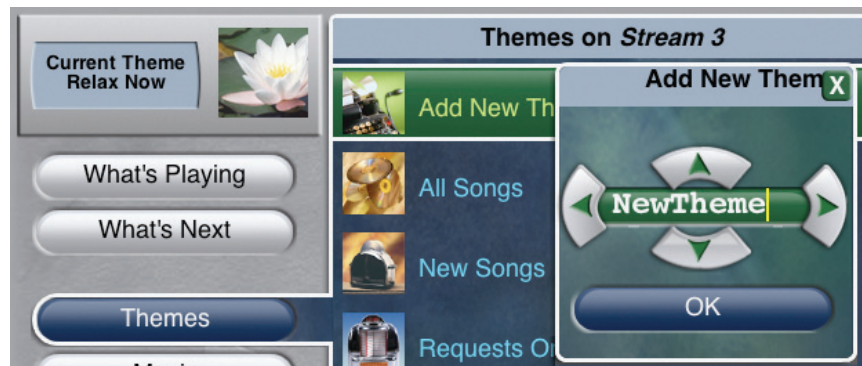
Here’s where your most recently added music can be seen.

### Requests Only

You create a “play only this” theme with Requests Only. Select this theme, then at Music, pick the songs or albums you want and add to the theme. These songs play through once, then the Requests Only theme goes quiet. This is useful if you want to listen to some songs but not add them to an existing theme.

## Creating a New Theme

Time to have some fun with your music. Creating themes is the heart of your media server experience. The main goal of Add New Theme is to decide how you want your new theme to be built – automatically (PMA) or by hand. This is also where you can view, set and change a Theme’s “recipe” after it has been created, and decide to add music automatically or manually.



Add a New Theme



## Creating New Themes

### How to add a theme

From the Themes window, choose Add New Theme. A name entry field appears. Enter the name you've picked for your theme (Easy Sunday Morning, Party Hearty, etc.) using the name entry field (backspace over to the beginning). From the PC, type in the name, or using the up/down arrows of the remote control, toggle through the characters (upper/lower case alphabet plus numbers). Once the name is spelled, hit enter or select to access the Edit Theme window.



In the Edit Theme window, scroll to "Configure." Choices appear here that guide your Theme Recipe - Is a Playlist, PMA Prefers, PMA Effect, What to Play, and Add Music.

### Sample Theme Recipes

The choices made in the Configure Theme screen affect the way music is added to your Theme. For a better understanding, here's a mythical family of media server users to show how their music preferences dictate how the theme is built. Let's meet the Millers – Dad, Mom, and Sis.

#### Dad

Dad is busy. He wants to be entertained and spend as little time as possible fussing with the media server. He likes to hear a variety of music in the evening, and is keen on listening to news, sports and weather. Here's how he'll set up his after-work theme:

**Name:** Relax After Work

**Is a Playlist:** No (*plays songs in varying order*)

**PMA Prefers:** Longest Since Heard (*rotates songs based on when last played*)

**PMA Effect:** Mostly random (*mixes songs to play different artists, genres, etc.*)

**What to Play:** Single songs (*plays individual songs*)

**Add Music:** Automatic (*all user music choices are added to the theme*)



Themes are self-expanding if left in the "automatic" mode. Once you select a theme (or it is selected by schedule), any music you select to hear is automatically added to the theme. So as I add songs, albums, artists, and genres your theme expands.



### How Does the PMA (Dean of Media) Work?

**The Dean of Media is your music concierge. I pay attention to your music likes and dislikes.**

**If I pick a song for a Theme based on your “recipe” and you skip over it when it plays, as PMA I will play it less often. If you repeat the song, I will see that and play it more often.**

**I notice any manual changes you make to Themes or playlists and adjust the automatic playback accordingly.**

## Creating New Themes

Dad also likes to listen to internet radio stations. He listens to three or four different ones but usually in the same order: the first for weather, the second for news, the third for in-depth stories and the fourth for music. Here’s how he will set up his theme:

**Name:** Radio News

**Is a Playlist:** Yes (*plays stations in order of the list, then returns to the first station*)

**Add Music:** Manual (*protects theme from any additions or deletions*)

But he listens to more than news over the internet. There are really no good blues stations available on local FM, but he has found a few great ones on the internet. Here’s how he will set up his theme:

**Name:** Blues Stations

**Is a Playlist:** Yes

**Add Music:** Manual

### Mom

Mom loves to listen to music, especially songs from the carefree days of the past. She wants variety but she wants to hear all the music she has cataloged. When she hears an artist, she wants to hear two or three songs by him before listening to someone else. But she wants to control what gets added to her theme. Here’s how she will set up her theme:

**Name:** Golden Days

**Is a Playlist:** No (*plays songs in varying order*)

**PMA Prefers:** Longest Since Heard (*rotates songs based on when last played*)

**PMA Effect:** Mostly PMA (*allows PMA to control song order*)

**What to Play:** 3 in a Row (*plays 3 in a row of same artist*)

**Add Music:** Manual (*user decides what music is added to theme*)

Mom also has a high-energy theme for cleaning and chores. When she has housework to do, she needs to be energized and entertained. She wants to hear different artists, and hear her favorite songs more than once. Here’s how she will set up her theme:

**Name:** Tunes for Chores

**Is a Playlist:** No (*plays songs in varying order*)

**PMA Prefers:** Highest Rated (*plays more-requested songs more often*)

**PMA Effect:** Mostly PMA (*Majority of songs are chosen by PMA*)

**What to Play:** Single songs (*plays individual songs*)

**Add Music:** Automatic (*PMA adds all user choices to theme*)

## Configure a Theme

### Sis

Sis is a textbook pre-teen. She can listen to the same song over and over and over. She wants to hear her favorites again and again, and doesn't want to be bothered with theme tinkering. Here's how her theme will be set up:

**Name:** Girl's Only

**Is a Playlist:** No (*plays songs in varying order*)

**PMA Prefers:** Highest Rated (*plays more-requested songs more often*)

**PMA Effect:** Only PMA (*PMA chooses all the songs*)

**What to Play:** Single songs (*plays individual songs*)

**Add Music:** Automatic (*PMA adds all user choices to theme*)

## Configure a Theme

Now that you have an idea of how the Configure Theme options direct the theme building, let's return to the Configure section on the Edit Theme page and build your newly named Theme.

### Theme Icon

You can choose a photo or graphic from the default theme icon collection to suit your theme. This graphic will appear next to your Theme's name on the Home page. Click on the icon to bring up the collection of available icons. Click on your choice; the media server returns to the Configure Theme page with the new icon in place.

### Name

This field shows the name you have chosen for your theme. To edit the name, click on the name and enter the desired name, using the Rename entry field pop-up. Click on OK to finish.

### Is a Playlist

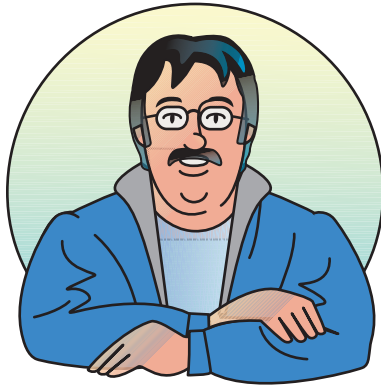
A "playlist" theme (choose Yes) plays the theme's songs one after another as listed and cycles to the top of the list when finished. A "non-playlist" theme (choose No) allows for more random song selection.

### PMA Prefers

Do you want the Personal Media Assistant to do the work of choosing your music? This is where you make that decision. The PMA can choose music by different criteria: Highest Rated, Longest Since Heard, or Recently Added. Your choice here provides direction for the PMA how to choose what to play when new music is added to the media server.



**For best PMA service, create only a handful of different Themes. Each theme has its own PMA, so the more themes you have, the less time the PMA has to watch you and learn your preferences if you are hopping from theme to theme.**



**When you request the PMA to play songs in a row, I set out to play two or three in a row by choosing a single song. I then select two or three more songs from the same artist in the theme.**

**If there aren't two other songs by the same artist, I add less, or if the songs selected are already in the song queue, I won't add more.**

## Configure a Theme

### PMA Effect

You can also limit how much “control” your PMA has over your theme.

#### Only Random

Choose this if you want to build your theme with no PMA help.

#### Mostly Random

This selection lets the PMA help a little, but you are still in charge.

#### Mostly PMA

Your PMA has much more control, but you can still put in your two cents.

#### Only PMA

The PMA is holding the reins and you are along for the great ride.

### What to Play

What's your preference? Do you want to hear two or three Beatles songs in a row whenever they come up to be played? How about albums only, so you can get the full effect of Pink Floyd's *The Wall*? Maybe you're in the mood for a change, so you want to hear a variety of single songs. You can change this setting at any time, in case your preferences change – and they will!

### Add Music

This is another place where you can have it your way. Choose “Manual” if you want control over what songs are added to your theme, and “Automatic” if you want the PMA to do it for you.



## Configure a Theme

If “Manual,” you must visit the “Add or Exclude” section under “Edit Theme” to add or delete music to/from your theme. If “Automatic,” the PMA will add any song you select to play while your theme is active. Music added to the media server that fits any theme “Recipe” will be automatically added to that theme.

### Add or Exclude

OK, your theme foundation is built. Now let’s decide what music will be added to it. On the same Edit Theme page, go up to the Add or Exclude selection. Here you will add or exclude various music criteria for your theme.

You can add items to your theme’s “recipe” here to build up its contents as you add more music. Add or Exclude songs by Genre, Artist, Album, Song Title, Longest Since Played, Recently Played and more. You can also choose “Add All Songs” to your theme which adds *all* the SMS3’s songs to the theme.

Do you want to block a genre (jazz) or an artist (Johnny Cash) from becoming part of your theme? Here’s where you choose your exclusion criteria for your theme.

Once you have selected your preferred music criteria, the pop-up window lets you view more details, or Add or Exclude from the theme. For albums, an Edit Album option is available.



**Remember, if your theme’s “Add Music” setting is “Manual,” you must visit the “Add or Exclude” section of the Edit Theme menu to add music to your theme!**





## Exploring Your New Theme

### Exploring Your New Theme



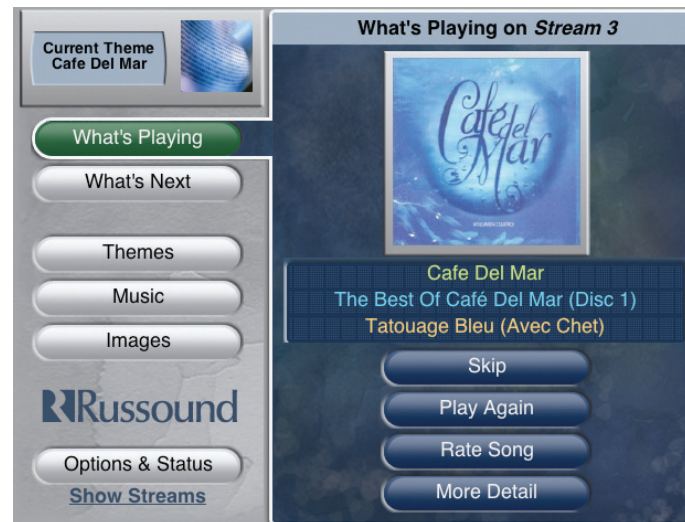
When manual choices are made to Theme contents, such as skip or repeat a song, as the Dean of Media I pay attention to the changes you've made and will follow your wishes when the song cycles within the theme. That is, if you have given me permission to act on your behalf. You decide within the Theme Editor how much power I can use when choosing music for you.

Let's check your progress to this point. Now you have cataloged CDs, created and named a Theme, set your preferences for PMA interaction, set music additions, and finished your recipe.

Once you return to the Home page, and select your new Theme from "Themes," you can explore your new theme.

Let's start with "What's Playing" on the Home page.

Underneath the album art and name of the song currently playing in the chosen theme, you will see some options: Skip, Play Again, Rate Song and More Details.



#### **Skip**

This choice tells the media server to stop playing this song and move to the next song in the list for this theme.

#### **Play Again**

This choice tells the media server to play this song again when the song is over.

#### **Rate Song (Not active in All Songs, New Songs, or Requests Only Themes)**

This choice appears in themes that are *not* playlist-designated. It opens another window with more options: Play More Often, Play Less Often, and Drop From Theme. When you make selections within this option, you affect the song's popularity rating within the theme, which the PMA uses to judge how much you like the song.

## Exploring Your New Theme

### Play More Often

This choice tells the PMA to select this song more often as it plays the theme.

### Play Less Often

This choice tells the PMA to select this song less often as it plays the theme..

### Drop From Theme

This choice tells the PMA to delete this song, artist, album or genre from this theme. On themes that are playlist-designated, this option appears instead of Rate Song.

### More Detail

This choice lets you see more information on the current song, the album it is from, the artist, or the song's genre.

### On This Song

This choice brings up more information about the currently playing song. It also has a link to edit this information.





**Be sure to wait until a disc has completed its cataloging process BEFORE making changes to song titles, artist or album!**

## Exploring Your New Theme

**Song** - The song title (Tatouage Bleu (Avec Chet))

**Artist** - Name of performer (Cafe Del Mar)

**Album** - Name of album this song appears on (The Best of Cafe Del Mar)

**Genre** - Category (General Electronic)

**Length** - How long the song is (3:58 minutes)

**Year** - Year of release (2004)

**Last Played** - Date and time the song was last played (11/29/2006 03:46:04 PM)

**Formats** - Encoding format the song is stored in (mp3)

**Track Added** - Date the song was added to the SMS3 (11/29/2006 03:38:17 AM)

**Rating** - Shows the ranking of the song within the Theme. (9/25 in Cafe Del Mar)  
No rating shows if the song is not part of the current Theme.

### Edit

This feature is useful when for some reason a song is cataloged with incorrect or missing information. This selection brings up more choices to edit Song Title, Artist, Album name, Genre, Track Number and Year. When each option is selected for edit, a name field appears in which to enter characters. You can also listen to the current song from this screen (Play Song) if you are unsure of the song's identification. The Edit Album selection allows for additional album detail edits. Choose Back to return to the previous screen.

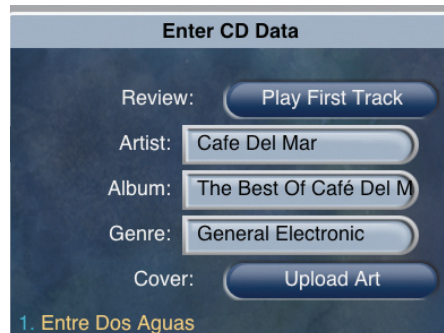
Edit Song screen



## Exploring Your New Theme

### Edit Album

This feature allows you to edit the name of the album's artist, album name, the genre it is associated with, plus edit any or all tracks on the album. You can play the first track (Review) if needed, plus upload new cover art for the album (Upload Art).



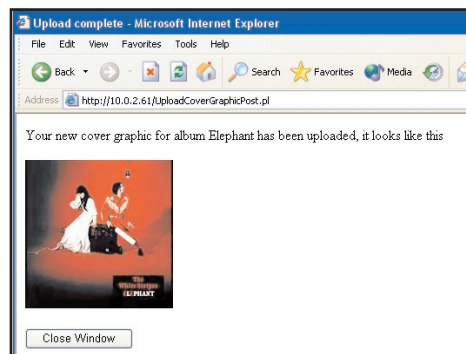
The screenshot shows a web form titled "Enter CD Data". It contains several input fields and buttons. The "Review:" field has a "Play First Track" button. The "Artist:" field contains "Cafe Del Mar". The "Album:" field contains "The Best Of Café Del M". The "Genre:" field contains "General Electronic". The "Cover:" field has an "Upload Art" button. At the bottom, there is a list of tracks, with "1. Entre Dos Aguas" visible.

### Cover (Upload Art)

(Note: this option only appears when the SMS3 interface is viewed from a networked computer)

This option lets you place or change album cover art for this album. The art file (JPEG, GIF, or PNG) to be uploaded should be located on your networked computer. The art can be any size, but it will be scaled down or up to 170 x 170 pixels. Smaller art files will be pixelated and larger files will be compressed.

To add album art, click on Upload Art. A new window opens from which to browse for the new file. You can also see any current cover art that will be overwritten, or choose Never Mind to Exit. Click Browse to locate the new art file on the network and click Upload when ready. The new window shows the new art for the album.



## Exploring Your New Theme

### Music Choices on the Fly

If your theme is set up to automatically add music, you can make changes to your theme as you listen to your media server by selecting “Music” on the Home page.

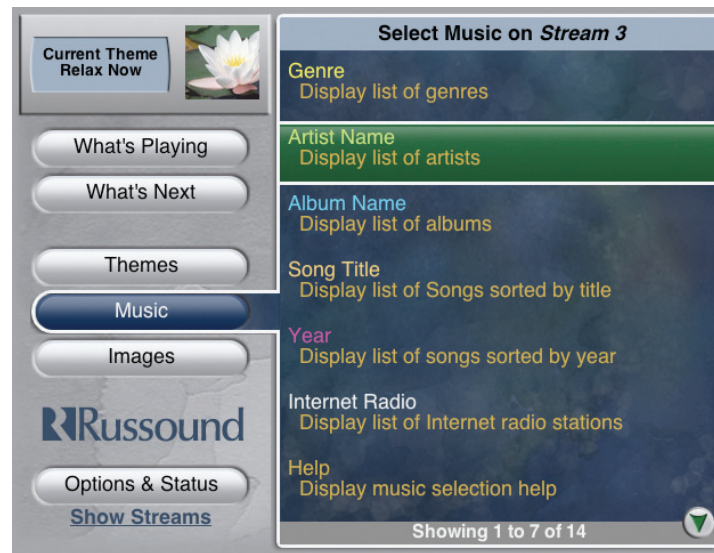
#### Music

If you want to change the music your PMA has set to play within the selected theme, use Music to make adjustments to your theme. The PMA (if enabled) will watch what you do and take your actions into account when making future music selections for you.

There are many ways by which you can choose music: Genre, Artist Name, Album Name, Song Title, Year, Internet Radio and Text Search. Also choose from Newest Additions, Longest Since Played and Recently Played songs for the selected theme and overall.

#### Genre

Looking for a particular type of music? Choose music by its genre – rock, jazz, new age, etc. Genres are pre-assigned to songs and arrive attached to the song’s information or metadata. You can search for a genre through the name entry field or choose from the list. Once the genre is selected, you can choose to play it now or soon, or delete the genre altogether. If you want to refine your selection, you can view all Artists, Albums or Tracks associated with the genre selected.



## *Music Choices on the Fly*

### **Artist Name**

You can choose music by artist. This selection lists all artists' names in alphabetical order. To make it easier to find an artist, enter the first letter of the name in the character entry field at the top of the page. The media server will then pare the list down to just those artists' names with the same first letter. The more letters entered, the more refined the list. Once the desired artist name is highlighted, a window opens with more choices: View Albums, View Tracks, Play Now, Play Soon, or Delete.

#### *View Albums*

This choice brings up a list of all albums by the selected artist that have been added to the media server. Once the desired album name is selected, a window opens with more choices: View Tracks, Play Now, Play Soon, Edit Album or Delete.

#### *View Tracks*

This choice brings up a list of all the tracks associated with this artist. Once you select a track, you can Play Now, Play Soon, Delete or see More Detail.

### **Album Name**

You can also choose music by album name. As with the artist name, a name entry field helps you narrow down the search, or scroll through the album name list.

#### *View Tracks*

Take a look at the artist and song tracks contained in the selected album. You can choose to play the track now or soon, delete or edit album.

### **Song Title**

If you know a song's name you can choose music by song title. As with the album name, a name entry field helps you narrow down the search, or scroll through the song titles list. Once a song is selected, you can look at more detail, or choose to play the track now or soon, or delete.

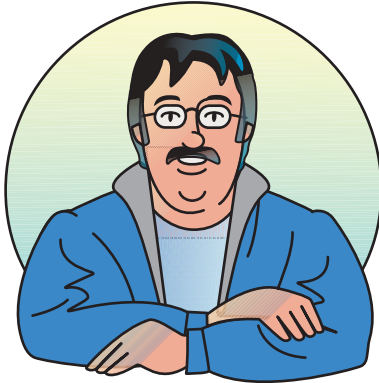
### **Year**

Don't know the song name, but you know it came out the year you graduated. Enter the album's release year in the name entry field and see the songs with that release date. You can also scroll through the year/song list. Once a song is selected, you can look at more detail, or choose to play the track now or soon, or delete.



**You are doing great! I can't wait to build these themes for you so you can kick back and relax!**

## ***Music Choices on the Fly***



**When you click the scroll arrows at the top and bottom of lists within the media server graphical interface, the arrows advance the list by “page” and not by individual item.**

### ***Internet Radio***

Any internet radio station links (.pls and m3u stream types with MP3 and OGG audio formats, AAC+ not supported) will be placed here when loaded into the media server (see page 40 for supported audio formats). Select a station from the list to play now, play soon or delete. An internet radio station will continuously play until it drops out or is changed.

### ***Text Search***

Perhaps you know the name of a song but not the artist, or vice versa. You can use a Text Search to find what you are looking for. Enter the first few letters of the artist or album in the name entry field, and the text search will bring up the artist, album, or song title that matches. The search results are more refined when more letters are entered. You can then see details, play the selection now or soon, or delete it.

### ***Newest Additions (Overall)***

Want to hear just the songs you’ve added today? Click on “Newest Additions Overall” and browse through the list of new songs. Dates and times are listed also to narrow your search down to a time frame if desired. You can choose to play a song now or soon, delete it or see more song details. The “Newest Additions In (selected Theme)” shows new additions for that theme only.

### ***Longest Since Played (Overall)***

You may want to hear songs you haven’t heard in a while. Just browse through “Longest Since Played” and have a look at how long it’s been since you’ve heard Barry Manilow’s “Mandy” by reviewing the date last played (shown as month/day/year). From here you can choose a song to play now or soon, or delete. The “Longest Since Played In (selected Theme)” shows longest since played for that theme only.

### ***Recently Played (Overall)***

Well, you were preoccupied when you heard that series of beautiful classical songs, and you want to hear them again now that you’ve plopped onto the couch. Just go to “Recently Played Overall” and take a look at what played a few minutes ago or an hour ago. Each song is time stamped as to when it aired during the last 24 hours. By selecting a song you can see more detail, choose to play it now or soon, or delete it. The “Recently Played In (selected Theme)” shows recently played songs for that theme only.

## ADVANCED TWEAKING

### Changing an Existing Theme

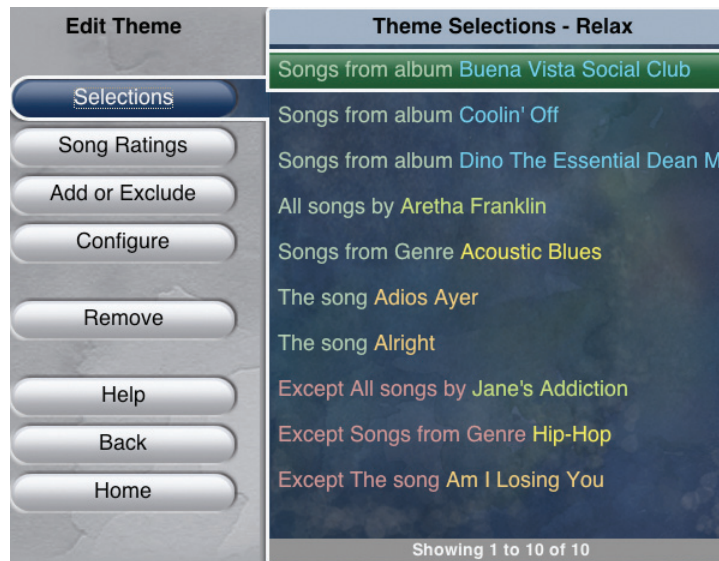
Once you have listened to your themes for a while, you may want to review the contents and find out why Willie Nelson shows up under your “New Age Favorites” theme. From the Home page, go to Themes, select the theme, choose Edit Theme from the pop-up window, and proceed to the Edit Theme window.

#### *Selections*

Here's your chance to peek under the hood and see what makes your theme run. In the Selections window, you can see the recipe you've created for your theme – songs, artists, genres, and albums. This represents the contents of the theme from the media server's point of view. This list grows as the PMA adds your music choices to the theme. You can also remove any of these selections from here.

#### *Song Rating (Option when theme is NOT a playlist)*

You can see your theme's songs here, and see how each rates in popularity within the theme. To move a song up or down in the theme's rating, select the song and from the pop-up window, choose to play it more often (moves up in rating), less often (moves down in rating), or exclude song from the theme.



## Changing an Existing Theme

### *Song Order (Option when theme IS a playlist)*

When the theme is a playlist, Song Order shows all the theme's songs in their "play" order. You can move any song up or down in the playlist by selecting it and choosing "Reorder Songs" to move the song to another spot on the list. You can also exclude the song from the theme.

### *Remove (Theme)*

The ultimate theme killer. This selection deletes the theme altogether, but the songs will remain in the media server database.

## Add My Own Theme Icons

Looking for something different for a theme icon? You can add your own digital pictures or line art for a theme icon from your computer.

Digital pictures and images are moved to the media server by accessing its hard drive through your computer via a home network. The media server supports JPEG, GIF, and PNG format digital images.

Before importing to the media server's hard drive, you must resize and rotate the image using photo editing software (this usually comes with a digital camera or PC). Select the image, orient it to landscape, then resize the image to 65 x 65 pixels.

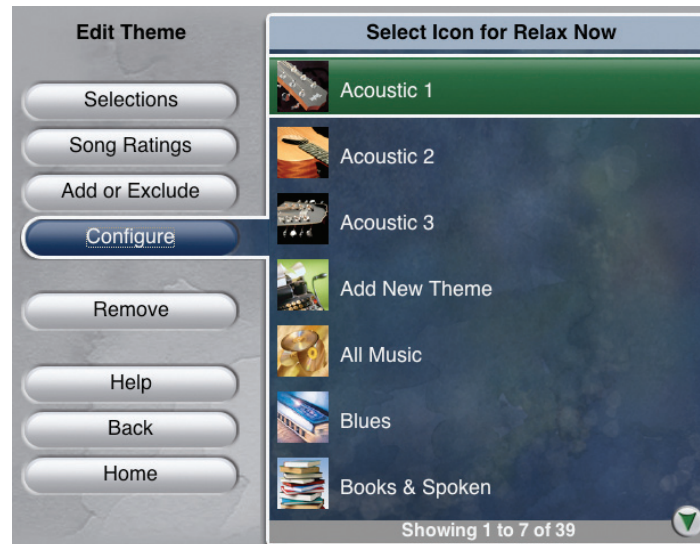


**Mac users - you can get to the media server's hard drive this way:**

**From the Finder menu, click "Go" and choose "Connect to Server."**

**Under "Server Address," enter smb://(media server IP address).**

**Under "Select a Share," you will see folders for Icons, Images, Incoming Music and Music.**





## Adding My Photos

Using a PC to access the media server's hard drive, in your computer's Internet Explorer browser address window, enter IP address of media server. Example: \\192.186.0.52 (IP address is available on the Network page under Options & Status.) Drag and drop the image files onto the media server's hard drive into the folder named Icons. Once added, it may take a few minutes to view the new icon on the media server.

If you are using a Macintosh computer, click on "Go" in the Finder menu and choose "Connect to Server." Under "Server Address," enter smb://(media server IP address).

Under "Select a Share," choose "Icons" and click "OK." Once the "Icons" folder is visible, drag and drop the image files onto the media server's hard drive.

Once the icons have been added, select the new icon for a theme by choosing the theme, select Edit Theme, select Configure, then choose the new icon from the Theme Icon list.



**All image editing, including photo rotations, should be completed using your photo editing application before importing the photos into the media server.**

## Adding My Photo Albums

You can build a photo album collection on the media server for viewing pictures within the user interface, as full-screen images or in a slideshow.

To add your JPEG, GIF or PNG photos, access the media server's hard drive by entering IP address of media server in the Internet Explorer browser address window.

You should see a series of folders on the media server: Images, Icons, IncomingMusic, Music, and Software. Open the "Images" folder, and create a new folder and name it according to its content (e.g., Trip to Colorado, Jed's Birthday Party, etc.). When you move your photos onto the media server, each set of images must be grouped in a named folder within the "Images" folder on the media server's hard drive. Nested folders are not supported and will be safely "flattened" by the SMS3.



View of SMS3 hard drive from Windows Explorer window



If you plan to import images AND music files, I suggest you import the music files first. The image importing process always takes precedence over importing music files. Sooo, importing a large number of image files makes your music files take a back seat when traveling to the media server hard drive.

## Viewing Images

On your computer, locate the image files you want to load onto the media server. Drag and drop the image files from your computer to the new folder you created in the “Images” folder on the media server. The new folder will then be available in the Images list onscreen on the media server.

## Viewing My Photo Albums

To view your images, choose “Images” from the Home page. Choose a photo album from the list of image folders. From the Images page, you can scroll through the image thumbnails, and select to view as a full screen image, or create a full-screen slideshow.

Current Theme Cafe Del Mar

Show Other Images

Russound

Home

San Francisco

Name of selected image folder

Select an image to view

Hike 011.JPG

Full Screen

Slideshow (10 sec)

Slideshow (20 sec)

Slideshow (30 sec)

page 1 of 1

Returns to Photo Albums page to see list of image folders

View images in full screen or slideshow



## Adding Digital Music Files

### How about my digital music files?

It is recommended that whenever possible, have the media server catalog the CDs you own by simply placing the CDs into the CD drawer. The media server uses album-based song organization, provides your choice of high encoding quality, provides album cover art and displays all of the CDs' metadata in a variety of ways.

For the music files you *DO* want to load onto the media server, it is easily done. Digital music files are moved to the media server by accessing its hard drive through your computer via a home network. The media server supports MP3, WAV (8 and 16 bit), OGG, and FLAC (8 and 16 bit) format digital music files.

When importing media, the SMS3 will only allow one of the formats (MP3, WAV, FLAC or OGG) for the same media file. If one of the formats already exists, placing another into the "Incoming Music" folder causes the file to be sent to the "Rejected" folder.

To access the media server's hard drive, in your computer's web browser address window, enter IP address of media server. On the media server's hard drive, open the "IncomingMusic" folder, and drag and drop the music files from your computer into the folder. Within one minute the files will start to disappear from the "IncomingMusic" folder, as the media server moves the files into the "Music" folder. The music files will then show up in the "New Songs" Theme on the media server.

The minimum required metadata on imported music is "title" and "artist." If these are not present, the SMS3 looks at the folder hierarchy to infer artist, album and title. If it can't infer, the new music file will be rejected, logged in "rejected.txt" and sent to a "Rejected" folder within the "IncomingMusic" folder on the media server hard drive. This metadata must be corrected in WinAmp or similar program and re-imported to the SMS3.



**Caution:**  
We do not advocate, support or otherwise encourage copyright infringement of pre-recorded material including any illegal download or copying of music files for use with the SMS3.

### Internet Radio

It's easy to add internet radio "stations" to your Themes. Your installer has added a small program called "Internet Radio Handler" on your Windows-based PC to seamlessly import your internet radio selections into the media server. Simply proceed to the desired internet radio station through the PC. When you select the internet stream to play (.pls and m3u stream types with MP3 and OGG audio formats, AAC+ not supported), the program automatically activates and asks if you want to forward the station to the media server, or play it locally on the PC.



## Internet Radio

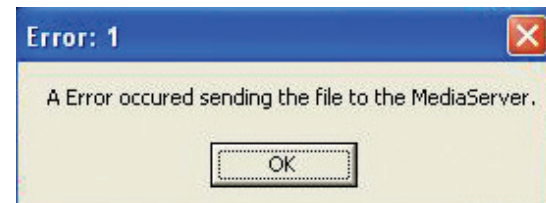
### Firewall Interaction with Internet Radio Handler

A security alert window may appear the first time the Internet Radio Handler is used. This occurs if the computer's operating system or other security software employs a program blocker in its firewall. For Microsoft Windows XP Service Pack (SP) 1, there should be no issues using the Internet Radio Forwarding Agent. For Windows XP Service Pack (SP) 2, the following procedure can be used. For other software firewalls, refer to the program's help files for specific information.

Using the Media Forwarding Agent for the first time with SP2 will result in a Windows Security Alert window asking if you want Windows Firewall to keep blocking this program. Select Unblock to add the program to the firewall Exception list. This allows the Forwarding Agent to communicate with the SMS3. A restart of the computer may be needed for these changes to take effect.

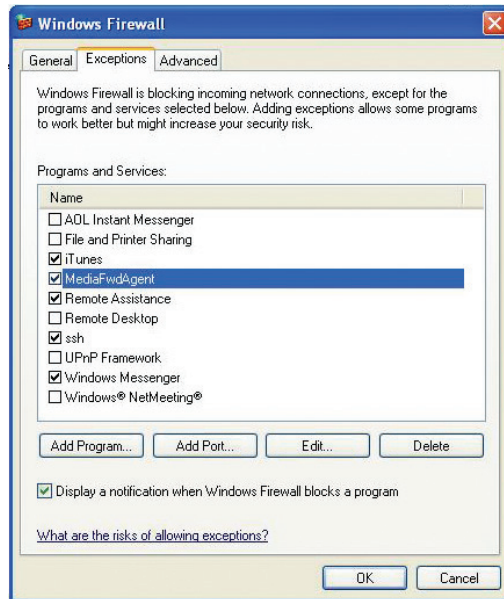


If you do not unblock the Forwarding Agent then it cannot talk to the SMS3 and you will get an error message telling you the Media Server could not be found, followed by another error message saying there was an error sending the file to the Media Server.



## Internet Radio

The Media Forwarding Agent can be added to the Exceptions list manually. Go to the computer's Control Panel and select Windows Firewall. In the Windows Firewall menu select the Exceptions tab. If "MediaFwdAgent" is not in the list select "Add Program" and add the program. When the program is added manually it will show up as "SMS3 Internet Radio Application." Make sure the box is checked and hit OK. A restart of the computer may be necessary for these changes to take affect.

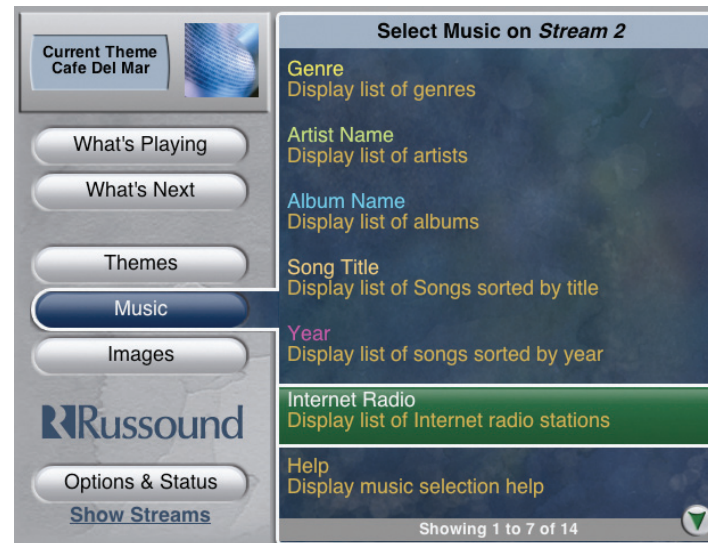


When you choose to forward the station to the media server, you will be asked to give the radio station a name. Type in the name you want and click OK.



## Internet Radio

Once named, the internet station link is placed into the “Incoming Music” folder, then moved to the Internet Radio category under “Music.” If the stream does not appear, make sure your PC’s time clock is accurate.



If you are a Macintosh computer user and are unable to use the Internet Radio Handler, you can use a file-sharing procedure to move the files from the Mac to the media server.

From the Mac web browser, find an Internet radio stream site (e.g., [www.shoutcast.com](http://www.shoutcast.com)) and click on a stream (.pls and m3u stream types with MP3 and OGG audio formats, AAC+ not supported). The stream should show up on the desktop as a .pls or .m3u file.

On the desktop, go to the “Connect to Server” option under “Finder.”

Under “Server Address,” enter smb:// (media server IP address).

Under “Select a Share,” choose “IncomingMusic” and click “OK.”

Once the “IncomingMusic” folder is visible, drag the .pls or .m3u file from the desktop and drop it into the “IncomingMusic” folder.

Within one minute the files will start to disappear from the “IncomingMusic” folder as the media server moves the files into the “Music” folder. The internet radio stream will now show up in “Internet Radio” under “Music” in the media server interface.

## Internet Radio

When you select an internet radio station on the media server, that station will play until it is changed or it drops out. If several internet stations are listed together in a theme, if one station drops out the theme will move to the next internet station and play it. If the internet station is in a theme that also contains songs, when the theme selects the station, it will play until changed, disregarding the other songs in the list. For this reason, we suggest the following treatment of internet radio stations.

Load one or more internet radio stations onto the media server using the Internet Radio Handler program mentioned above.

Create a new theme for these stations. Choose a name OTHER THAN "Internet Radio" to avoid confusion with the Internet Radio default music category.

Edit the theme in the Configure Theme window. The following settings are suggested:

**Is a Playlist:** Yes

**PMA Prefers:** n/a

**PMA Effect:** n/a

**What to Play:** Single songs

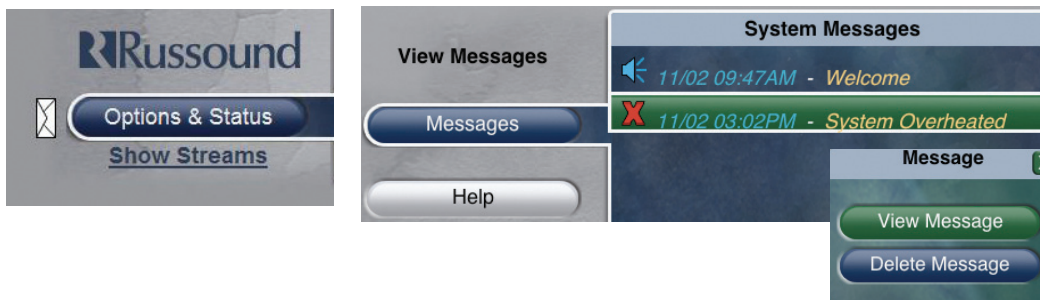
**Add Music:** Manual

From the Home page, select Music and enter the Internet Radio category. Click on each internet radio entry (Name.pls) you want in this theme and choose "Add to Theme."

## Options & Status

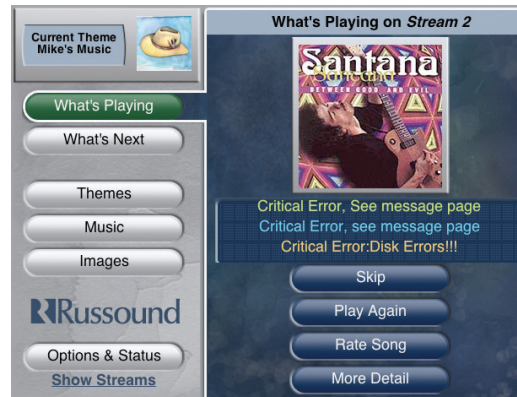
### View Messages

The message center allows the SMS3 to communicate important information to you about the SMS3's operation. The messages may concern system performance issues such as hard drive issues or overheating, or let you know an update is available. If you see an envelope icon on the What's Playing page, it indicates that messages are waiting. Go to the Options & Status page, select View Messages and choose a message. You can either view it or delete it from the message center.

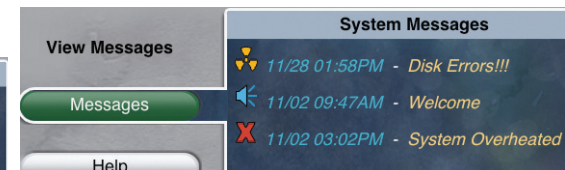


## View Messages (continued)

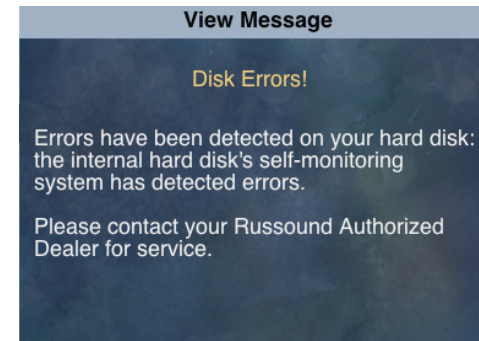
On the rare occasion the media server encounters disk errors, a “Critical Error” message will appear on all the computer interfaces and connected displays (also on RNET keypads if the SMS3 is the selected source). The message will remain until deleted from the View Messages page. If this message appears, call you authorized Russound dealer as soon as possible to protect your media server’s music files.



Critical Error message on  
What's Playing page



Retrieving Critical Error message



Example text of Critical Error message

## Schedules

Schedules are used to automatically select themes to play at specific times of specific days. Schedule choices are based on days of the week (Monday, Tuesday, etc.) and hours of the day (a.m. and p.m.), but not based on calendar dates (23rd, 31st). For example, the media server can be scheduled to select and play a certain theme every Monday at 8:00 p.m., but not for the 25th of each month. Schedules are a great way to automatically mix a variety of themes during the day, as the media server is designed to play one theme continuously until another theme is chosen.



## How to add a schedule

From the “Home” page, select “Options & Status.”

Choose “Setup Schedules.” Created schedules will appear here in a list. Existing schedules can be edited or deleted from this page. Select “Add Schedule.”

The “Edit Schedule” window appears for the new schedule.

To create a schedule, pick the day and turn it “on” or “off.” Select the hour and A.M. or P.M., then choose the theme you want to play at that time from the list of Themes. One day may have up to 24 schedules (one for each hour), and each schedule is created separately. Each time (on the hour) that you want to start another theme, create a Schedule for it.

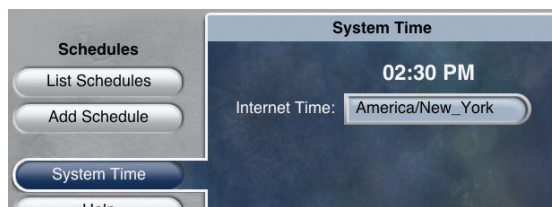


**You can set a schedule for specific times of specific days, rather than calendar dates. So you can schedule music for 7 p.m. on Fridays rather than for the 12th of each month.**

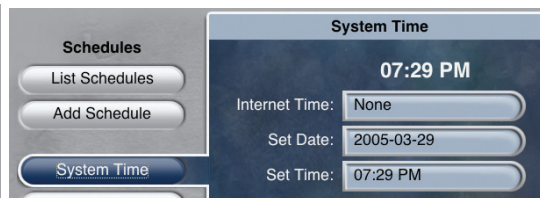
## System Time

If the current time shown in the System Time window is incorrect, the time can be corrected from the Schedules page. Select System Time, and select the appropriate Internet time zone from the pull-down list.

The time can also be adjusted by selecting None for the Internet Time, and entering the desired Date and Time in the appropriate windows. Be sure to follow the date and time formats as shown.



Network/Internet Time



Set Date and Time



## *Review Music*

### **Review Music**

When you have cataloged a CD and the media server has detected errors in artist name or song titles, or in the genre or album name, you can review and correct these errors in Review Music.

To review the music, select Options & Status from the home page, and select Review Music from the list. Select Review All, Review Errors or Review Duplicates.

### **Review All**

Under Review All, you can Play First Track to get a clue if the album or artist name is unknown. Edit the artist, album name, genre or individual track names using the name entry field pop-up for each selection. You can also upload new album art if desired.

### **Review Errors**

Under Review Errors, you can correct lookup errors that occur when cataloging a CD. There are two types of errors. Either the Gracenote database lookup yielded more than one name, or was unable to find the name. These errors are corrected in the same manner as under Review All.

### **Review Duplicates**

Under Review Duplicates, you'll see a list of songs of which there is more than one copy on the media server. Select the song, choose More Detail, and see the list of duplicates. "Extra" songs can be deleted here. Deletion is permanent and it can take some time to delete a large number of songs at one time.



## Backups

### Review No Covers

Under Review No covers, you'll see a list of albums that do not have cover art. This list is useful if you want to see only those albums that need covers. When the album is selected, it brings up an album edit page from which you can upload cover art.

### Network Information

You can easily locate your media server's IP address through the Network page (under Options & Status). Here you will see the current IP address plus other network information.

### Backing Up Media Server Hard Drive

Your media server is actually a compact computer, with a processor and hard drive. As with a PC or laptop, hard drive backups should be performed on a regular basis to preserve and protect the files.

We require the use of a FireWire external hard drive (USB not supported) to back up the music and other files from the media server. The SMS3 requires a 160GB or higher capacity hard drive, and the SMS3-250 will require a 250GB or higher hard drive. The external hard drive must be dedicated to the SMS3, as backups reformat the drive. The drive should be left connected to the SMS3 to be available for incremental backups as music and media are added.

The SMS3 supports a standard Backup, Fast Backup and Auto-Backup.

A standard Backup option takes the most time to complete, but preserves audio quality to those listening while in progress. A Fast Backup option may be selected to speed up the backup process, but audio quality may be affected. An automated backup option performs a standard backup every day at 4 a.m. (media server system time) when the external hard drive is connected to the media server. This option is either enabled or disabled.

The first time a complete backup is performed on the media server, it may take a few hours or a few days, depending on how many files are loaded into the media server's hard drive, and how much the media server is being used during the backup. Once the initial backup is performed, subsequent backups should take much less time. These are incremental backups and copy only those files that are new or have changed since the last backup.

Before you create a backup, connect the external hard drive to the FireWire port on the back of the SMS3.



**Warning:** It is required that a dedicated FireWire external hard drive be used to backup and restore files from/to the media server. USB drives are not supported.

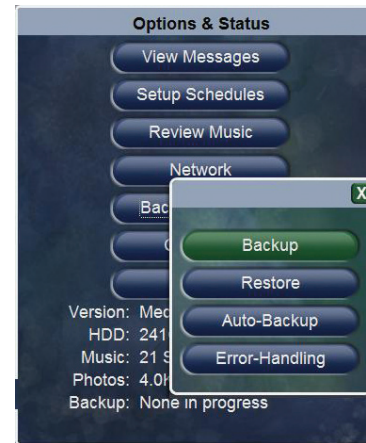
**This process formats the external hard drive. Once it is used to back up the media server, the external backup hard drive cannot be read by Windows or MacOS. Do not connect it to your computer!**

## Backups

Select Options & Status from the home page, and choose Backup/Restore. Select Backup, then choose Start Backup or Start Fast Backup. When the backup begins, the media server will display “Backup (Restore) in progress” on the screen. Once the backup procedure is complete, the SMS3 will display “Backup procedure is complete.”

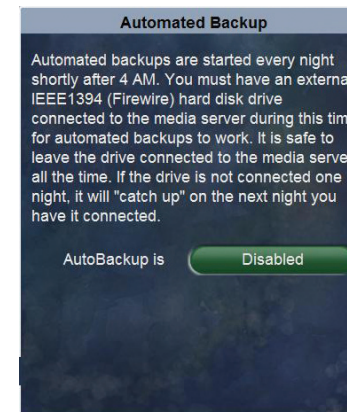


**When Auto-Backup is enabled, check the media server's system time. The backup starts daily at 4 a.m. according to the system time. If the server time is incorrect, the backup time will be off as well.**



If Auto-Backup is selected, choose Enable or Disable. If enabled, the media server will perform a backup every day at 4 a.m. This time is derived from the media server's system time that is set under “Schedules.”

For more detailed information on backups, please review the SMS3 Installation Manual.





**Congratulations!**

**You did a great job!**

**If you have more questions about using your media server,  
make sure you call your  
authorized Russound dealer for assistance:**

**Name:**\_\_\_\_\_

**Phone:**\_\_\_\_\_

**Happy Listening!**

One server...

...three streams of music

**RNET**

Russound  
5 Forbes Road, Newmarket, NH 03857  
tel 603.659.5170 • fax 603.659.5388  
[www.russound.com](http://www.russound.com)  
E. & O.E.

Rev. 4    12/08/06    28-1162

©2006 Russound. All rights reserved.



**muze**

COMPACT  
**disc**  
DIGITAL AUDIO

**mp3**